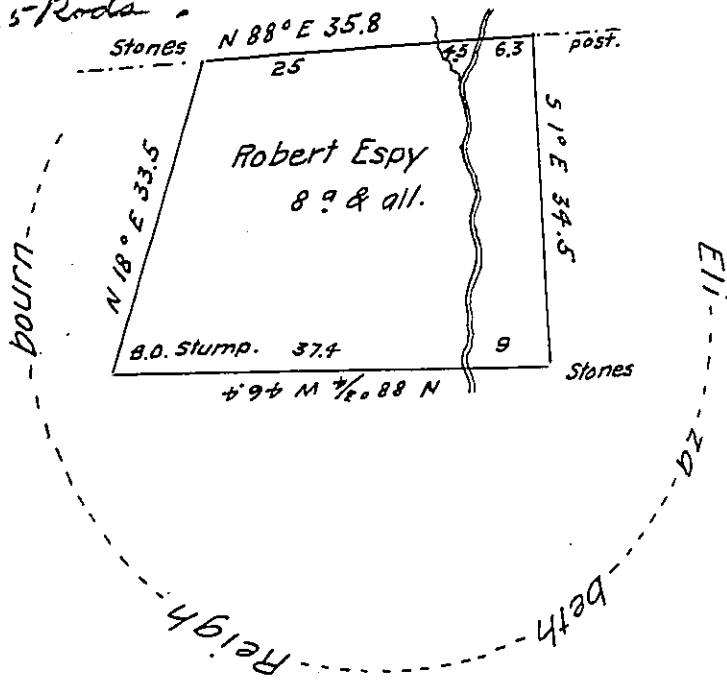


Widow Marshman

Scale: 1" = 25 Rods



Note, there are about three Acres
 cleared & a Cabbin built thereon but
 no family resides on the premises at
 present
 A M. Clean
 Richd T. Leech Esq. S.G.
 (NB. Scale of 25 to the Inch)

Situate in Tyrone Township Fayette County & Surveyed the 25th
 day of March 1815 in pursuance of a warrant dated the 9th day of February
 1815
 Pr Alexander M. Clean Deputy
 To Richard T. Leech Esquire
 Surveyor Generale

IN TESTIMONY that the above is a copy of the original remaining on file in
 the Department of Internal Affairs of Pennsylvania, made
 conformably to an Act of Assembly approved the 16th day of
 February, 1833, I have hereunto set my Hand and caused
 the Seal of said Department to be affixed at Harrisburg,
 this sixteenth day of November 1904

Isaac P. Brown
 Secretary of Internal Affairs.